

PROVEN PERFORMANCE AND AFFORDABILITY !

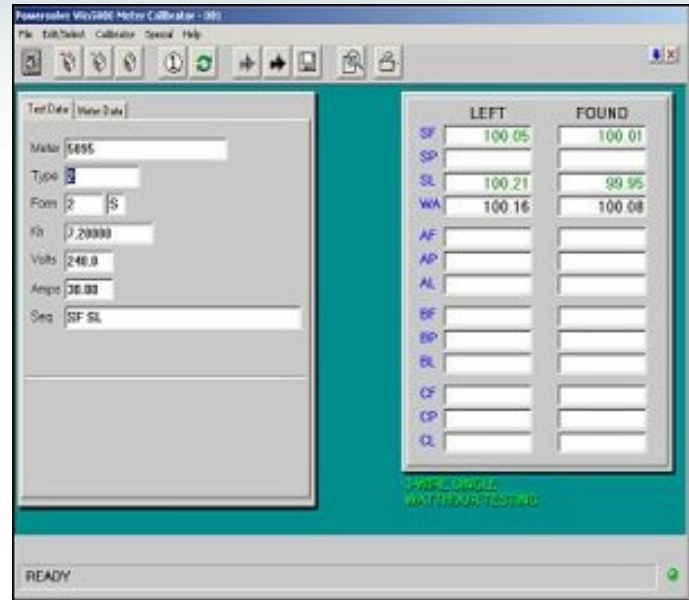
A Powerful Replacement

Win5800 is a meter testing application designed to control the RFL 5800 model calibrator. Completely written from the ground up to operate within a Windows ® environment, Win5800 is a direct replacement for the original DOS software.

Feature Packed with Powerful Tools

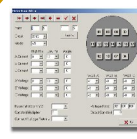
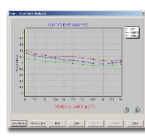
Win5800 will work exactly like the original DOS software. Even the keystrokes are the same. Newly added wizards will walk you through functions such as volt & load curve analysis. Need to import data from the DOS version? No problem. Win5800 comes with a handy import wizard! And just released is our new Upload5800 application that will allow you to export data to a file. Upload5800 allows you to create your own file specification with many formatting options and then schedule a job to create that file. Once the job is finished it can automatically FTP the data to an external location and send you an email with the results. Download a trial version today!

To find out more about how your company can benefit from Win5800, contact our location on the back or visit us at www.powersolve.com



Features

Load Curve Analysis	Pulse Initiator Testing
Volt Curve Analysis	User Defined Fields
Meter Forms Editor	True 32-bit Windows ®
Enhanced Security	Microsoft Access ® Database
Real Values Display	Import Wizard to convert existing data
Print/Transfer Data	90 Days of Free Support





Specifications

Operating Systems

- Windows 95
- Windows 98
- Windows NT
- Windows 2000
- Windows XP

Bundled / Available Modules

- Admin5800
- Upload5800

Supported Databases

- Oracle ®
- Microsoft SQL Server ®
- IBM DB2 ®
- Microsoft Access ®
- Sybase ®

Accessories

- Barcode Scanners
- Barcode Printers
- Handheld Computers
- Touch Screens
- Labels
- Ribbons
- Cables